



South Carolina Department of Health and Environmental Control

**Lewis Drive Release Site /
Plantation Pipeline Release
Belton, SC**

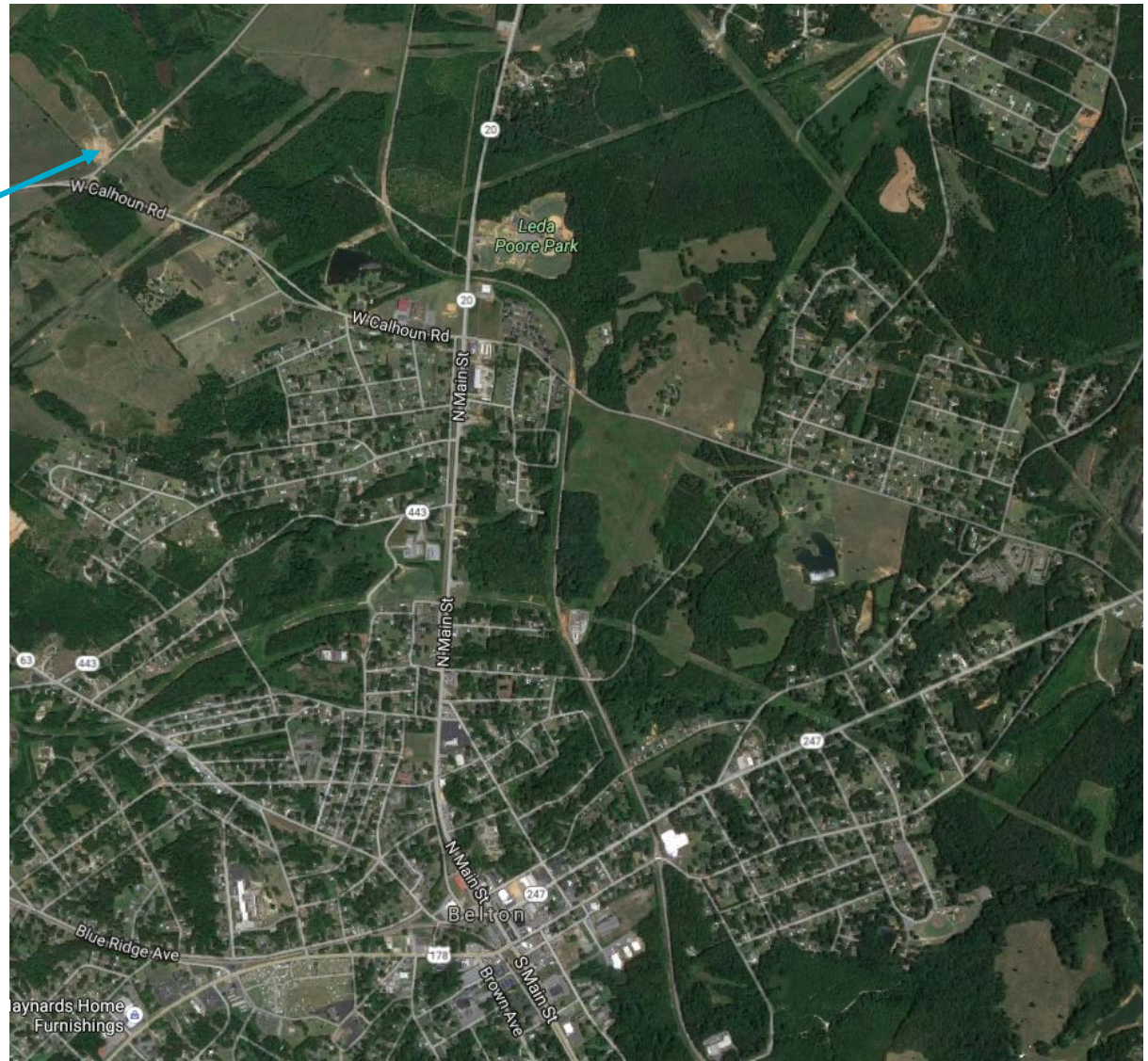
November 30, 2016

Donald L. Siron, P.G.
Assistant Bureau Chief
Bureau of Land and Waste Management

Location

Release discovered
December 8, 2014
approximately 1.5 miles
northwest of Belton, SC.

Caller reported odor and
dead vegetation in a ditch
near the pipeline along Lewis
Drive just north of Calhoun
Road.



Background Information

Plantation Pipeline estimates 369,600 gallons of gasoline and diesel (mostly gasoline) released to the environment.

The pipeline was repaired and Lewis Drive was reopened to traffic the week of December 19, 2014.



Initial Actions



Actions performed in attempt to recover petroleum product, prevent contamination from reaching Brown's Creek and Cupboard Creek, and stop contamination from moving downstream in Brown's Creek:

- 2,800 tons of contaminated soil was removed from the site.
- 98 temporary monitoring wells were installed initially to locate petroleum product and determine the extent of groundwater contamination.
- 20 product recovery sumps
- 15 product recovery wells
- Product recovery trench up-gradient of Brown's Creek
- 7 hard impermeable booms and 10 soft absorbent booms in Brown's Creek

Release Status

209,085 gallons of product recovered via routine vacuum extraction.

Free product gauging and recovery conducted weekly.

Petroleum contamination is present in groundwater and Brown's Creek.



Project Status

Plantation Pipeline's Corrective Action Plan (CAP) is currently under review.

Product recovery, air sparging and diffusion aeration proposed to address contamination at the site.

Public comment period for CAP ends on December 6, 2016.

Installation of remediation system is underway (horizontal wells, etc.)

The CAP predicts surface water contamination should be abated within a few months of system startup.

Operation of the groundwater remedial system is anticipated for 10+ years.



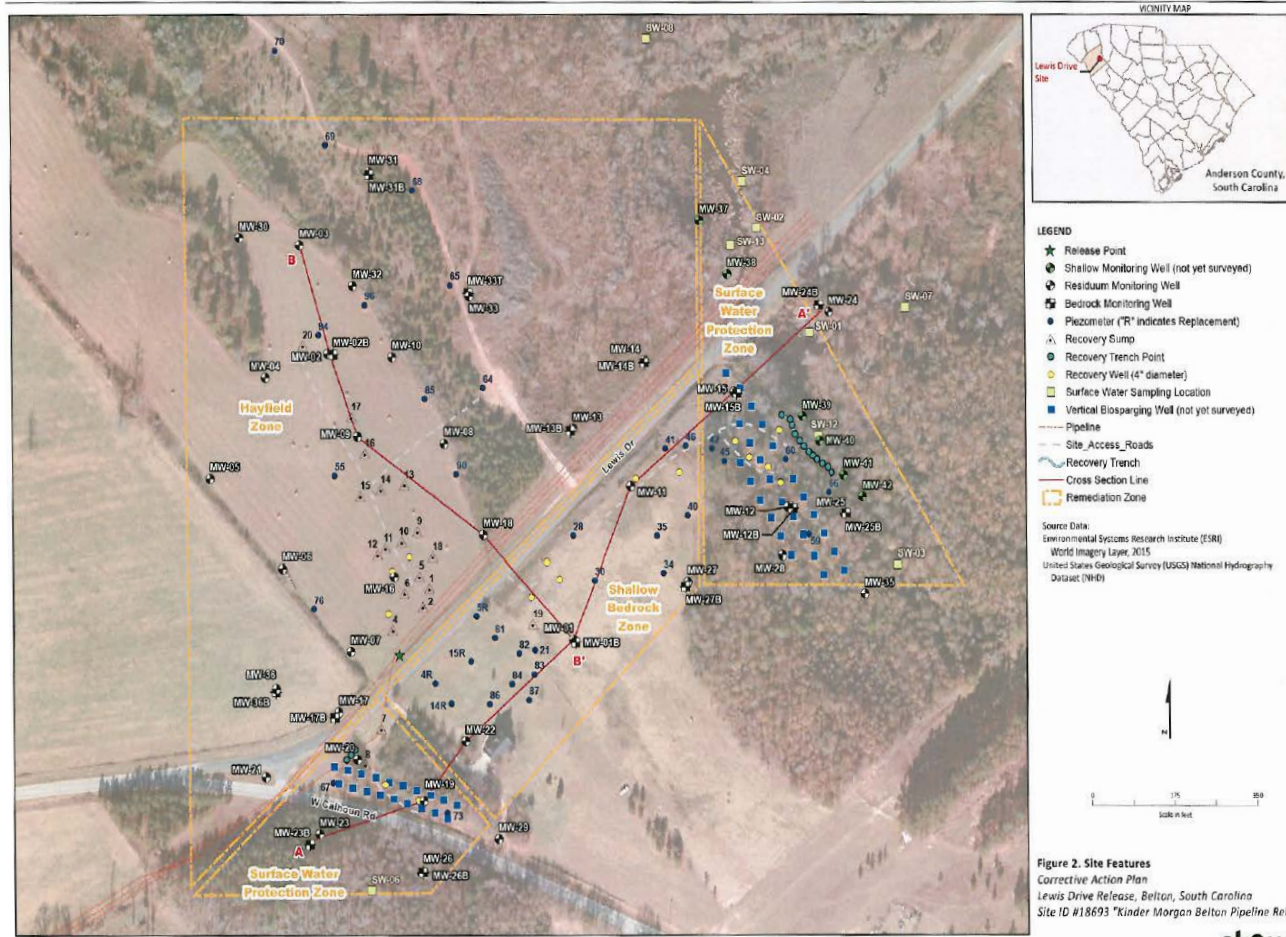
Corrective Action Plan Details

Four Key Areas Addressed:

- Brown's Creek
- Cupboard Creek
- Hayfield Area
- Former Private Home Property

Remediation Methods:

- Air Sparging Technology
- Free Product Removal
- Diffusion Aeration



DHEC's Role in the Remediation Process

- Prevent or minimize potential for exposure to contaminants.
- Review assessment data and findings to determine if the nature and extent of the contamination has been defined.
- Evaluate CAP to make sure the proposed remedy is appropriate.
- Continued review and oversight to ensure remediation is moving toward cleanup goals that are protective of human health and the environment.



Path Forward



- Continued oversight of product removal, installation and operation of groundwater remediation system and monitoring efforts at the site.
- Routine quarterly meetings and frequent telephone conferences with Plantation Pipeline representatives and consultants.

CONTACT US

Bureau of Land and Waste Management
2600 Bull Street
Columbia, SC 29201
(803) 898-2000

Stay Connected